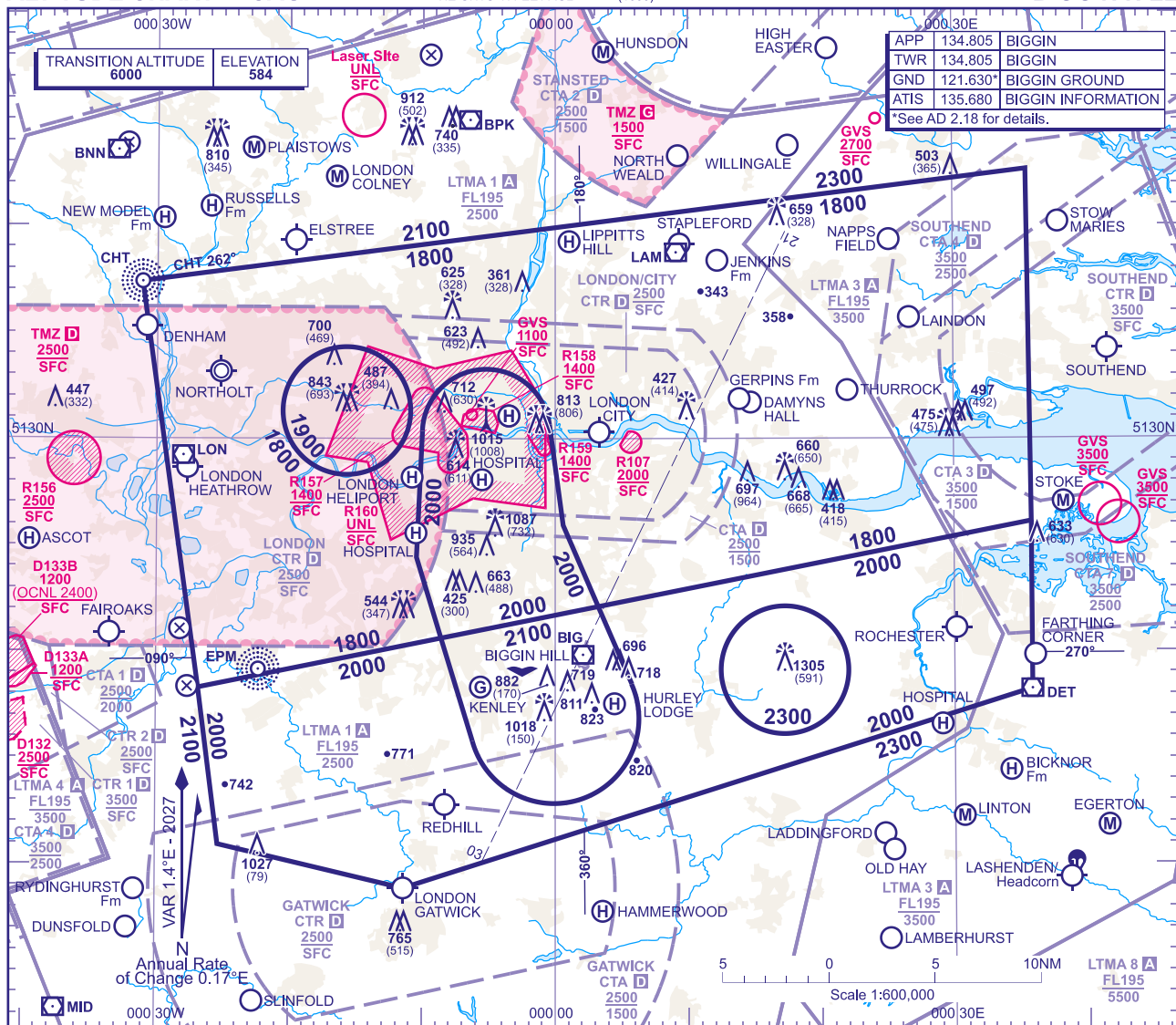


# ATC SURVEILLANCE MINIMUM ALTITUDE CHART - ICAO

BEARINGS, TRACKS AND RADIALS ARE MAGNETIC  
ELEVATIONS IN FEET AMSL 1015  
HEIGHTS IN FEET AGL (1008)

BIGGIN HILL



## MINIMUM INITIAL ALTITUDE

Within the ATC Surveillance Minimum Altitude area the minimum initial altitude to be allocated by the approach surveillance controller is:

- 2100** in the sector defined by the lateral limits: 512038N 0000835W - 512207N 0000314E - 511829N 0000545E thence clockwise by an arc of a circle radius 4NM centred on 511651N 0000005W to 511548N 0000613W - 512038N 0000835W.
- 2000** in the sector defined by the lateral limits: 513022N 0001000W thence clockwise by an arc of a circle radius 3NM centred on 513016N 0000512W to 513040N 0000026W - 512556N 0000036E - 512207N 0000314E - 512038N 0000835W - 512426N 0001026W - 513022N 0001000W.
- 2000** in the sector defined by the lateral limits: 511818N 0002650W - 512038N 0000835W - 511548N 0000613W thence anticlockwise by an arc of a circle radius 4NM centred on 511651N 0000005W to 511829N 0000545E - 512207N 0000314E - 512606N 0003549E - 511814N 0003550E - 510853N 0001125W - 511056N 0002519W - 511818N 0002650W, except within 3NM radius circle enclosing the Wrotham Mast (511914N 0001714E) where the minimum altitude is **2300**.
- 1900** in the sector defined by the lateral limits: a circle radius 3NM centred on 513119N 0001542W.
- 1800** in the sector defined by the lateral limits: 513723N 0003108W - 514239N 0003533E - 512606N 0003549E - 512207N 0000314E - 512556N 0000036E - 513040N 0000026W thence anticlockwise by an arc of a circle radius 3NM centred on 513016N 0000512W to 513022N 0001000W - 512426N 0001026W - 512038N 0000835W - 511818N 0002650W - 513723N 0003108W.

## OUTSIDE THE DESIGNATED ATC SURVEILLANCE MINIMUM ALTITUDE AREA

The minimum altitude to be allocated by the approach surveillance controller will be either the Minimum Sector Altitude, or **1000** above any fixed obstacles:

- within 5NM of the aircraft\*, and
- within the sector 15NM ahead of and within 20° either side of the aircraft's track\*.

\*When the aircraft is within 15NM of the radar antennae, the 5NM in a) and the 15NM in b) may be reduced to 3NM and 10NM respectively.

## LOSS OF COMMUNICATION PROCEDURES

### Initial Approach

Continue visually or by means of an appropriate final approach aid. If not possible proceed at not above **2300**, to join the **ALKIN** holding pattern†.

### Intermediate and Final Approach

Continue visually or by means of an appropriate final approach aid. If not possible follow the Missed Approach Procedure to join the **ALKIN** holding pattern†.

†In all cases where the aircraft returns to the holding facility the procedure to be adopted is the Radio Failure Procedure detailed at ENR 1.1.3.4.

## GENERAL INFORMATION

- Levels shown are based on QNH.
- Only significant obstacles and dominant spot heights are shown.
- The minimum levels shown within the ATC Surveillance Minimum Altitude Area are in conformance with the Standard European Rules of the Air - SERA.5015.
- Minimum Sector Altitudes are based on obstacles and spot heights within 25NM of the Aerodrome Reference Point.
- Controlled airspace with a base in excess of **5000** or FL55, as appropriate, is not shown.
- 913FT vertical separation approved against the Crystal Palace mast to meet ATS operational requirements.
- The ATC Surveillance service is provided by Primary and/or Secondary Radar equipment.
- This chart may only be used for cross-checking of altitudes assigned when in receipt of an ATC Surveillance service.**